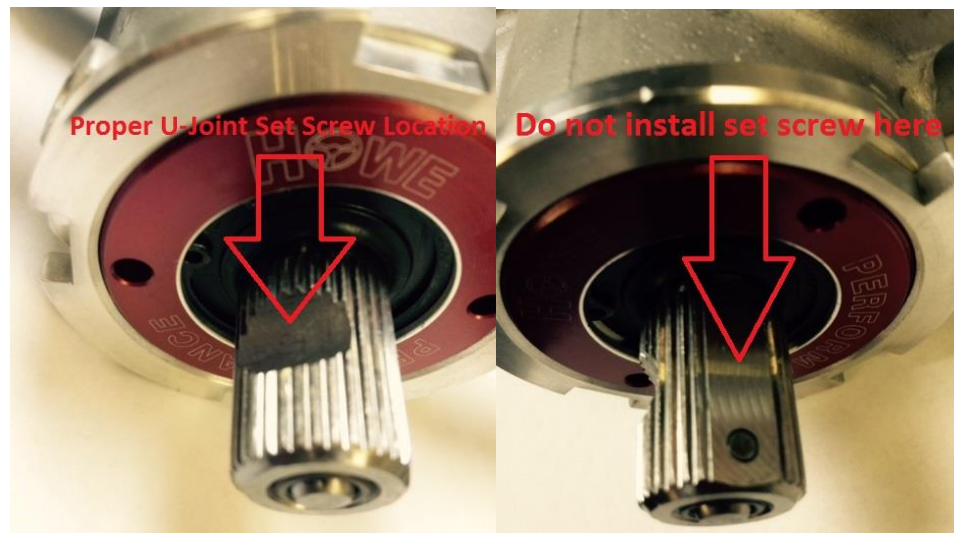


U-Joint Instruction Sheet

- All standard U-joints have a working angle of **32 degrees**. Double U-joints have a working angle of **80 degrees**.
- When building steering shafts, **we do not recommend installing the U-joints clocked together**. We want the yolks to be 90 degrees offset from each other. We do not clock the yolks of the U-joints like Drive shafts are clocked.



- When installing U-joint onto Steering box or Control Valve, Place **set screw on the dish of the input shaft**, not on the flat surface.



- Standard U-joint are 3.750" Long and measure 1.3550" across the bearing
- Double U-joints are 5.600" Long and measure 1.3550" across the bearing