

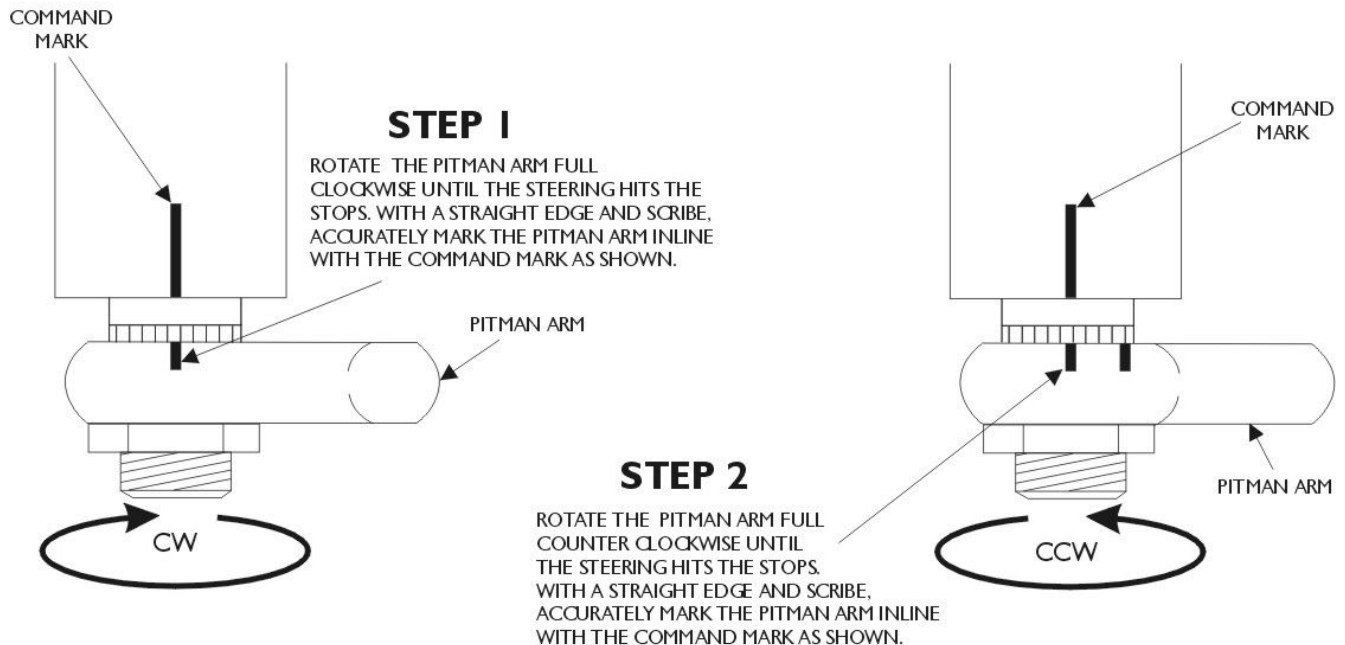
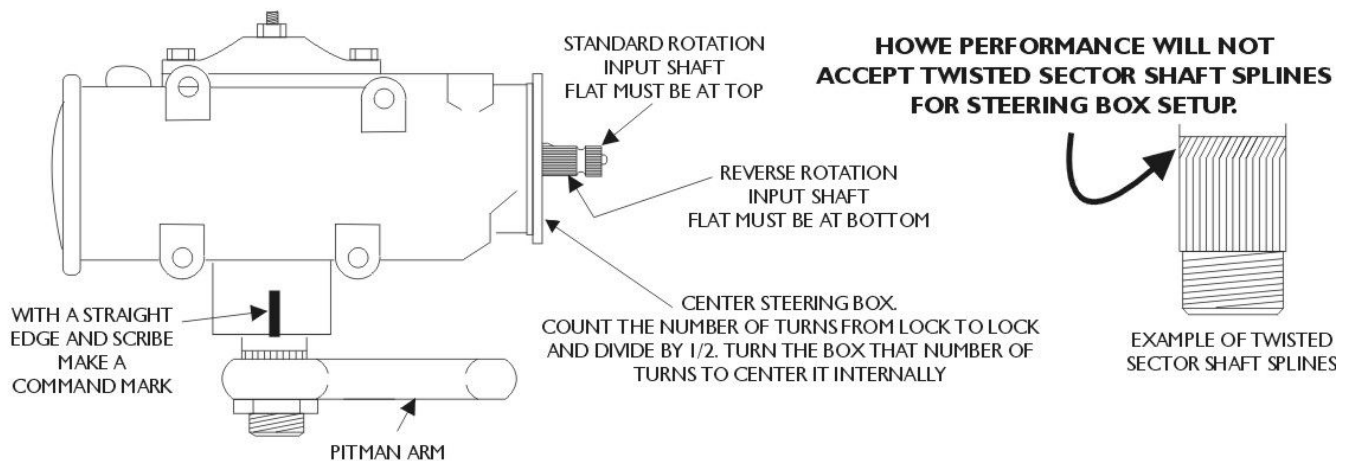
# PROPER MARKING OF THE STEERING BOX FOR INTERNAL STOPS

THE ACCURACY OF THE BOX INTERNAL SETUP IS COMPLETELY  
BASED ON THE ACCURACY OF THE PITMAN ARM MARKUP.  
TAKE YOUR TIME, DOUBLE CHECK YOUR WORK

**NOTE: BEFORE MARKING THE STEERING BOX FOR INTERNAL STOPS,  
THE FOLLOWING THREE REQUIREMENTS MUST BE MET:**

- ① THE FRONT WHEELS MUST BE POINTED STRAIGHT AHEAD AND ALIGNMENT BE CORRECT.
- ② THE STEERING BOX MUST BE CENTERED INTERNALLY .
- ③ THE FLAT ON THE STEERING BOX INPUT SHAFT MUST BE AT THE TOP POSITION.

**IF ANY OF THESE ARE NOT MET, IT MUST BE CORRECTED PRIOR TO MARKING THE BOX.**



**STEP 3** DO NOT REMOVE THE PITMAN ARM FROM THE STEERING BOX.

UNMOUNT THE STEERING BOX FROM THE VEHICLE AND CAREFULLY  
PACK AND SHIP IT TO HOWE PERFORMANCE.  
HOWE PERFORMANCE WILL THEN SET UP THE INTERNALS OF THE  
STEERING BOX BASED ON THE ACCURACY OF THE PITMAN ARM MARKS.

IF YOU HAVE ANY QUESTIONS ABOUT THE INSTALL CALL HOWE PERFORMANCE (619) 561-7764