

ROCK RACER Full Hydraulic System W/ RELIEF VALVE

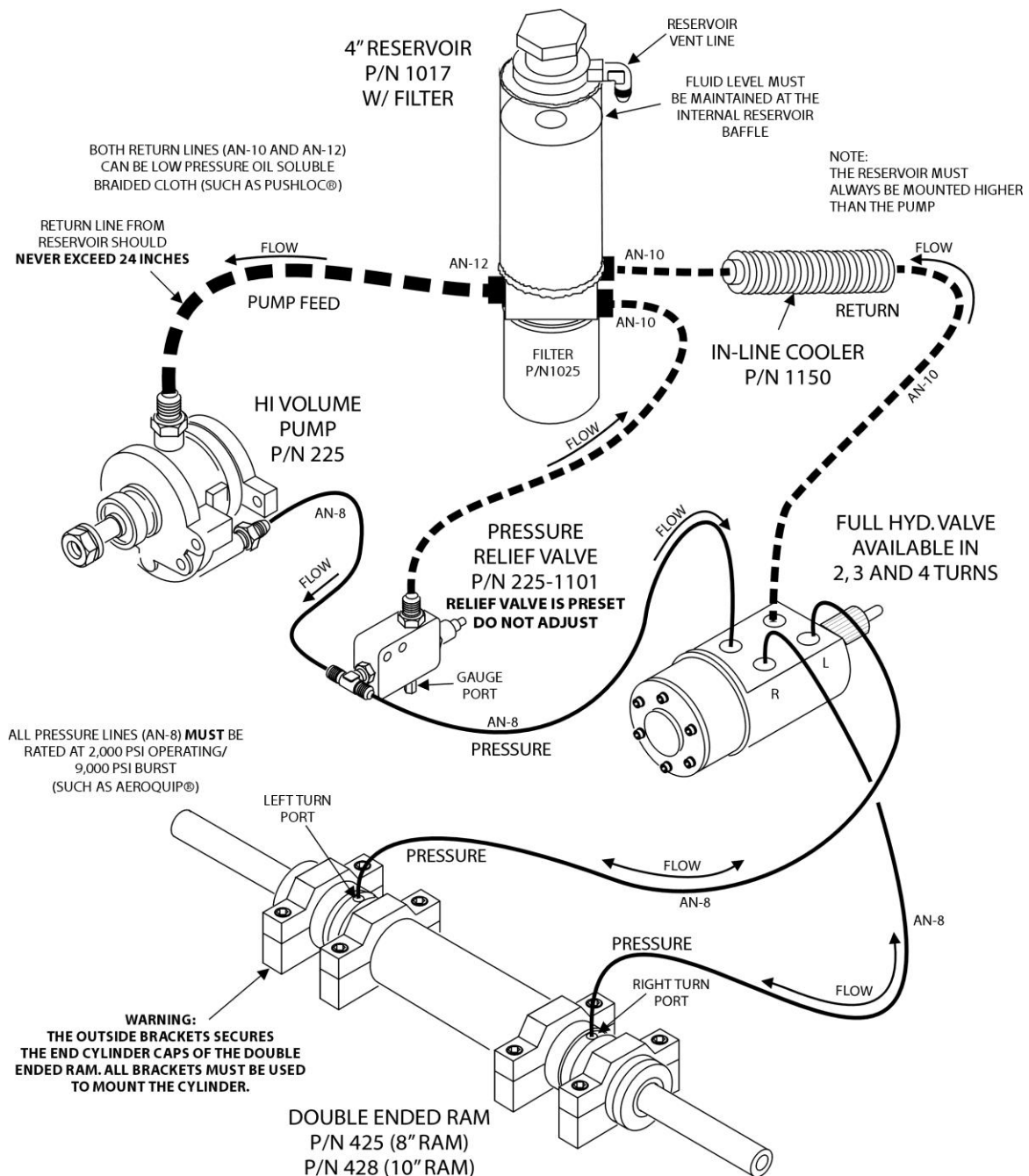
Hose installation diagram

POWER STEERING FLUID: Howe Power Steering Fluid PN 1105
(GM AC Delco PN: 89021182 may be substituted if needed)

CAUTION:
DO NOT USE ATF (AUTOMATIC TRANSMISSION FLUID)

Use only Sta-Lube Marine grease p/n SI3120 (tube), SI3121 (tub), any other will void warranty

NOTE: Hose lengths will vary with each installation, custom hoses must be fabricated.
Hose kits are available separately.



IF YOU HAVE ANY QUESTIONS ABOUT THE INSTALL CALL HOWE PERFORMANCE (619) 561-7764